

SMI2 Microbiological Incubator



Model Name / Order Part ID	SMI2/SLM222
Capacity	2.0 cu.ft. (56.3 liters)
Interior Dimensions (W x D x H)	15.0" x 15.0" x 15.2" 381 x 381 x 386 mm
Exterior Dimensions (W x D x H)	21.3" x 22.3" x 26.0" 541 x 566 x 660 mm
Unit Weight	83 lb (37.6 kg)
Shipping Weight	117 lb (53 kg)
Shelves	2 standard, 6 maximum
Maximum Weight Per Shelf	35 lb (15.9 kg)
Permitted Total Load	70 lb (31.8 kg)
Standard Door Gasket	Vinyl
Access Port	1
Controls	Digital
Warranty	2 Year Warranty
Interior Construction	430 Stainless Steel
Exterior Construction	Painted Cold Roll Steel
Vertical Clearance	2" (51 mm)
Wall Clearance, Each Side	4" (102 mm)
Wall Clearance, Rear	4" (102 mm)



Electrical

Electrical Supply /Hz, AC, 1Ø	50/60 Hz, 100-120 AC, 4.5 Amps
Nominal Power (watts @ 37°C)	89 watts
Plug Supplied	NEMA 5-15P
Energy Consumption (kWh/day) - At 37°C	2.1

Temperature Range Ambient +8°C to 70°C

Recovery after Door Opening (30 sec.) - Minutes to 37°C	4.0
Recovery after Door Opening (60 sec.) - Minutes to 37°C	5.0

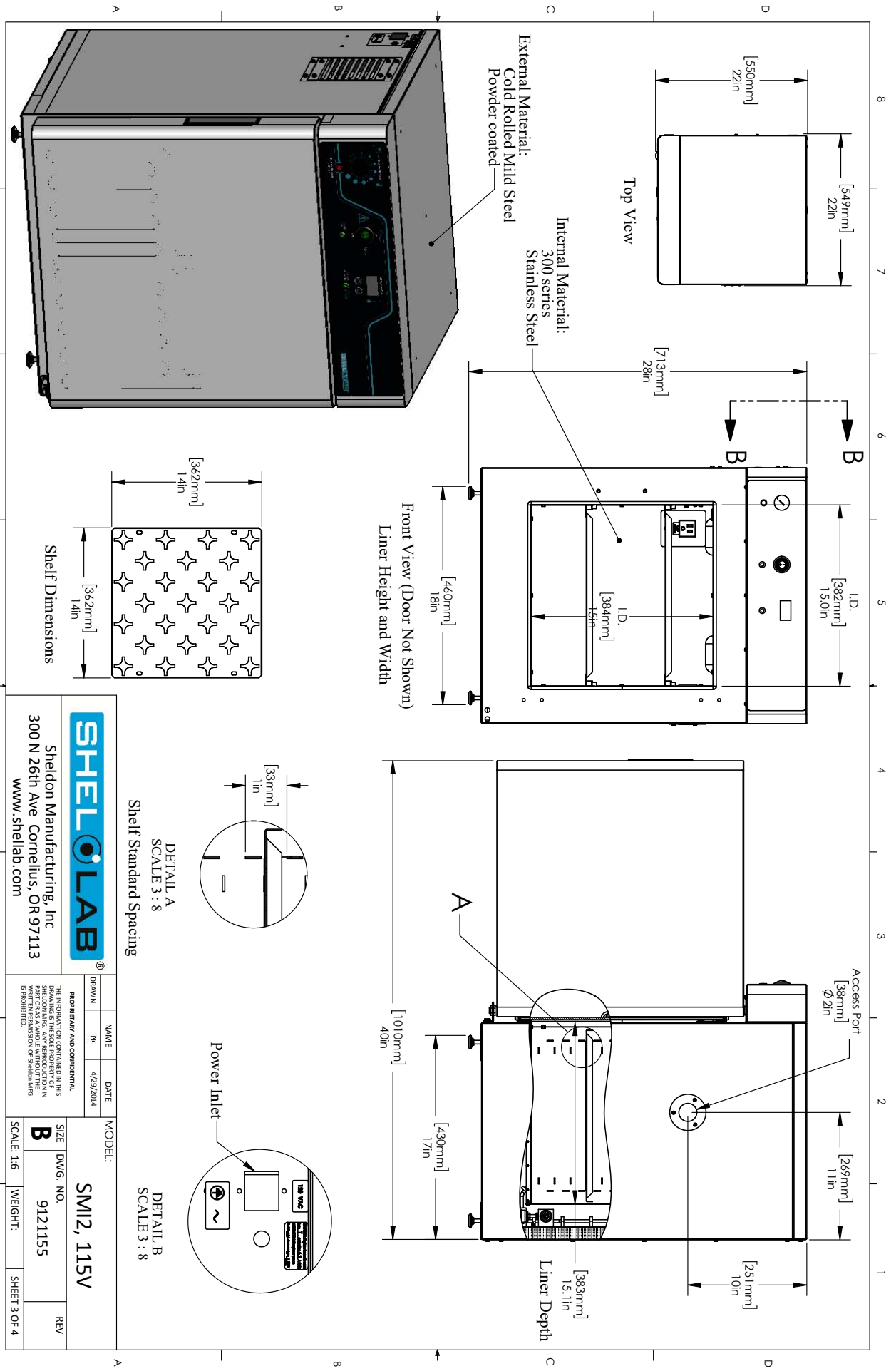
Temperature Uniformity

At 37°C	0.5
---------	-----



Learn More About Sheldon Manufacturing
sales@sheldonmfg.com
sheldonmanufacturing.com
 (503) 640-3000





SHELL LAB		Sheldon Manufacturing, Inc 300 N 26th Ave Cornellius, OR 97113 www.shellab.com	
PROPRIETARY AND CONFIDENTIAL	NAME	DATE	MODEL:
THIS DRAWING IS THE SOLE PROPERTY OF SHELDON MANUFACTURING, INC. ANY REPRODUCTION OR TRANSMISSION OF THIS DRAWING WITHOUT THE WRITTEN PERMISSION OF SHELDON MFG. IS PROHIBITED.	PK	4/29/2014	SM12, 115V
	SIZE	DWG. NO.	REV
	B	9121155	
SCALE: 1:6	WEIGHT:	SHEET 3 OF 4	