

# SVAC2

## Vacuum Oven Spec Sheet

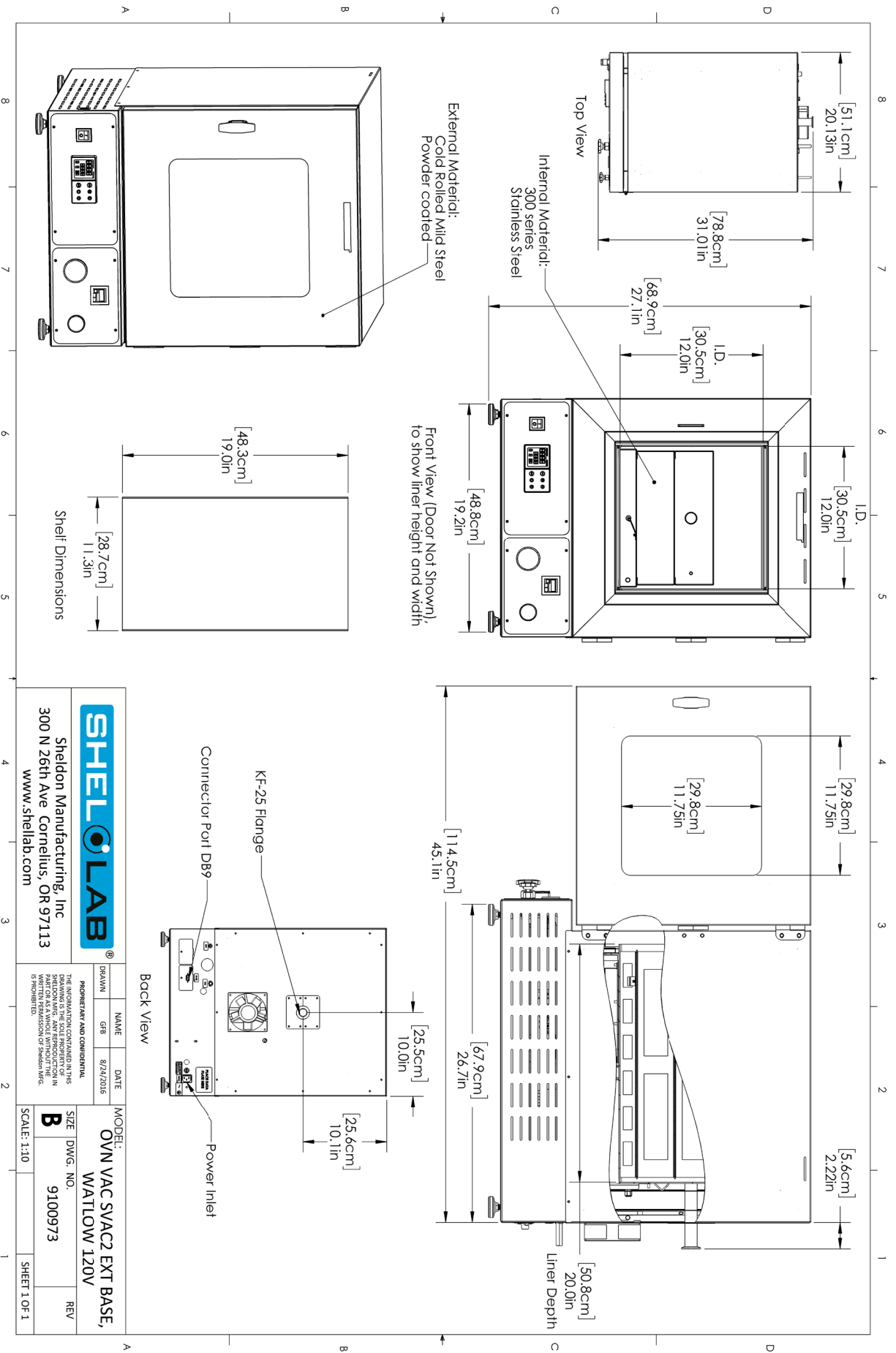


| Model Name / Order Part ID            | SVAC2 / SLV222                              |
|---------------------------------------|---|
| Exterior Dimensions (W x D x H)       | 20.8" x 31.3" x 26.8"<br>528 x 795 x 681 mm |
| Interior Dimensions (W x D x H)       | 12" x 20" x 12"<br>304 x 508 x 304 mm       |
| Interior Volume                       | 1.67 cu.ft. (47.2 liters)                   |
| Unit Weight                           | 182 lb (83 kg)                              |
| Shipping Weight                       | 253 lb (115 kg)                             |
| Interior Construction                 | 300 Stainless Steel                         |
| Exterior Construction                 | Painted Cold Roll Steel                     |
| Standard Chamber Gasket               | Silicone                                    |
| Shelves                               | 3 included, 3 Max                           |
| Shelf Dimensions (W x D)              | 11.3" x 19" (287 x 483 mm)                  |
| Maximum Weight per Shelf              | 35 lb (15.8 kg)                             |
| Permitted Total Load                  | 105 lb (47.6 kg)                            |
| Controls                              | EZ-ZONE Watlow                              |
| Access Port                           | KF-25                                       |
| Vertical Clearance                    | 12" (305 mm)                                |
| Wall Clearance, Each Side             | 6" (152 mm)                                 |
| Wall Clearance, Rear                  | 12" (305 mm)                                |
| <b>Electrical Data</b>                |   |
| Frequency                             | 50/60Hz                                     |
| Voltage                               | 110V-120V                                   |
| Power Current (Max Draw), Amps        | 10  |
| Nominal Power (watts @150°C)          | 662   |
| Plug Supplied                         | NEMA 5-15P                                  |
| <b>Energy Consumption (kWh/day)</b>   |   |
| At 80°C                               | 12.8  |
| At 150°C                              | 15.4  |
| At 220°C                              | 24.4  |
| <b>Temperature Data</b>               |   |
| Heat-Up to Ambient — Minutes to 80°C  | 70  |
| Heat-Up to Ambient — Minutes to 150°C | 120   |
| Heat-Up to Ambient — Minutes to 220°C | 200   |
| Temperature Range                     | 10°C above ambient to 220°C                 |
| Temperature Stability                 | +/- 0.2°C @ 150°C                           |
| Operational Vacuum Range              | -3.0 to -29.9 InHg                          |
| Vacuum Display Range                  | 0-29.9 InHg                                 |
| <b>Misc.</b>                          |   |
| Warranty                              | 2 Year Limited Warranty                     |
| Safety Certifications                 | UL 61010-1, EN 61010-1, CSA 61010-1, CE     |



**Learn More About Sheldon Manufacturing**  
[sales@sheldonmfg.com](mailto:sales@sheldonmfg.com)  
[sheldonmanufacturing.com](http://sheldonmanufacturing.com)  
 (503) 640-3000





|  |  |   |                                      |
|--|--|---|--------------------------------------|
|  |  | <b>Sheldon Manufacturing, Inc</b><br>300 N 26th Ave<br>Cornelius, OR 97113<br>www.shellab.com |                                      |
|  |  | DRAWN: GBR<br>DATE: 8/24/2016   | NAME: GBR<br>DATE: 8/24/2016         |
| PROPRIETARY AND CONFIDENTIAL<br>THE INFORMATION CONTAINED IN THIS DRAWING IS THE SOLE PROPERTY OF SHELDON MANUFACTURING, INC. AND IS TO BE USED ONLY FOR THE PART OR AS A WHOLE WITHOUT THE WRITTEN PERMISSION OF SHELDON MFG. CO. |  | MODEL: OVN VAC SVAC2 EXT BASE,<br>WATLOW 120V   | SIZE: B<br>DWG. NO.: 9100973<br>REV: |
| SCALE: 1:10  |  | SHEET 1 OF 1  |                                      |